



Patient Medical Homes

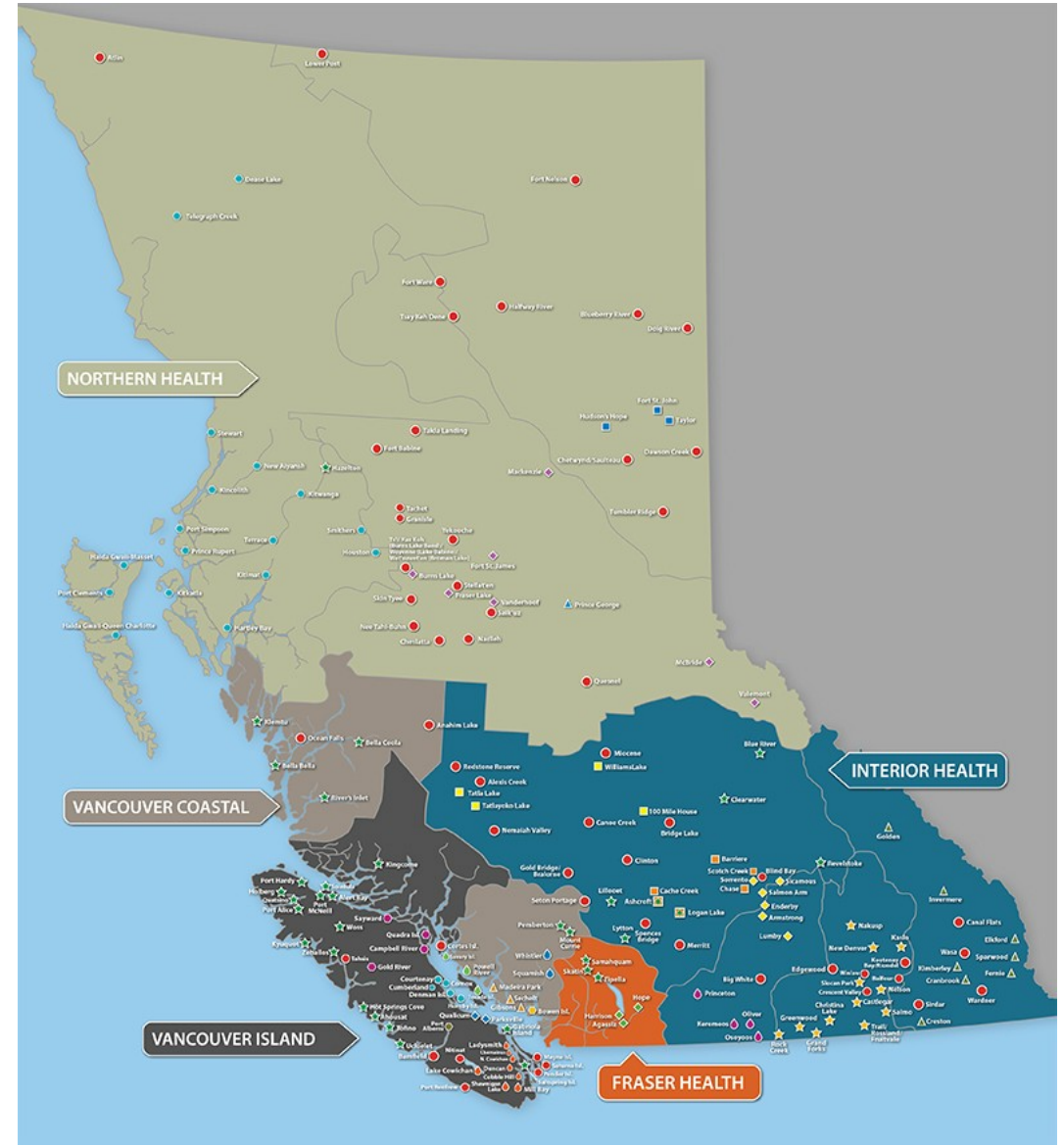
The reality in rural communities

GOALS

Share and deepen our collective understanding of an *effective integrated system of care* in VCH rural communities.

Share *strengths and enablers* that can *enhance* Patient Medical Homes in VCH rural communities.

Share ideas and build connections...



The reality of PMH in rural communities

- **Telehealth and outreach to small communities:** Hope
- **Population based funding:** North Peace Division
- **Proof of Concept Journey:** Kootenay Boundary Division
- **Opiate Replacement Clinic:** Sunshine Coast Division
- **Aboriginal Engagement:** South Okanagan Similkameen
- **Physician Leadership:** East Kootenay Division
- **Maternity Care:** Campbell River and District Division
- **Team-Based Care in Pemberton:** Rural and Remote Division

The reality of PMH in rural communities

- Telehealth and outreach to small communities
- Population based
- Proof
- Opiate
- Aborig
- Physi
- Maternit
- Team-Ba

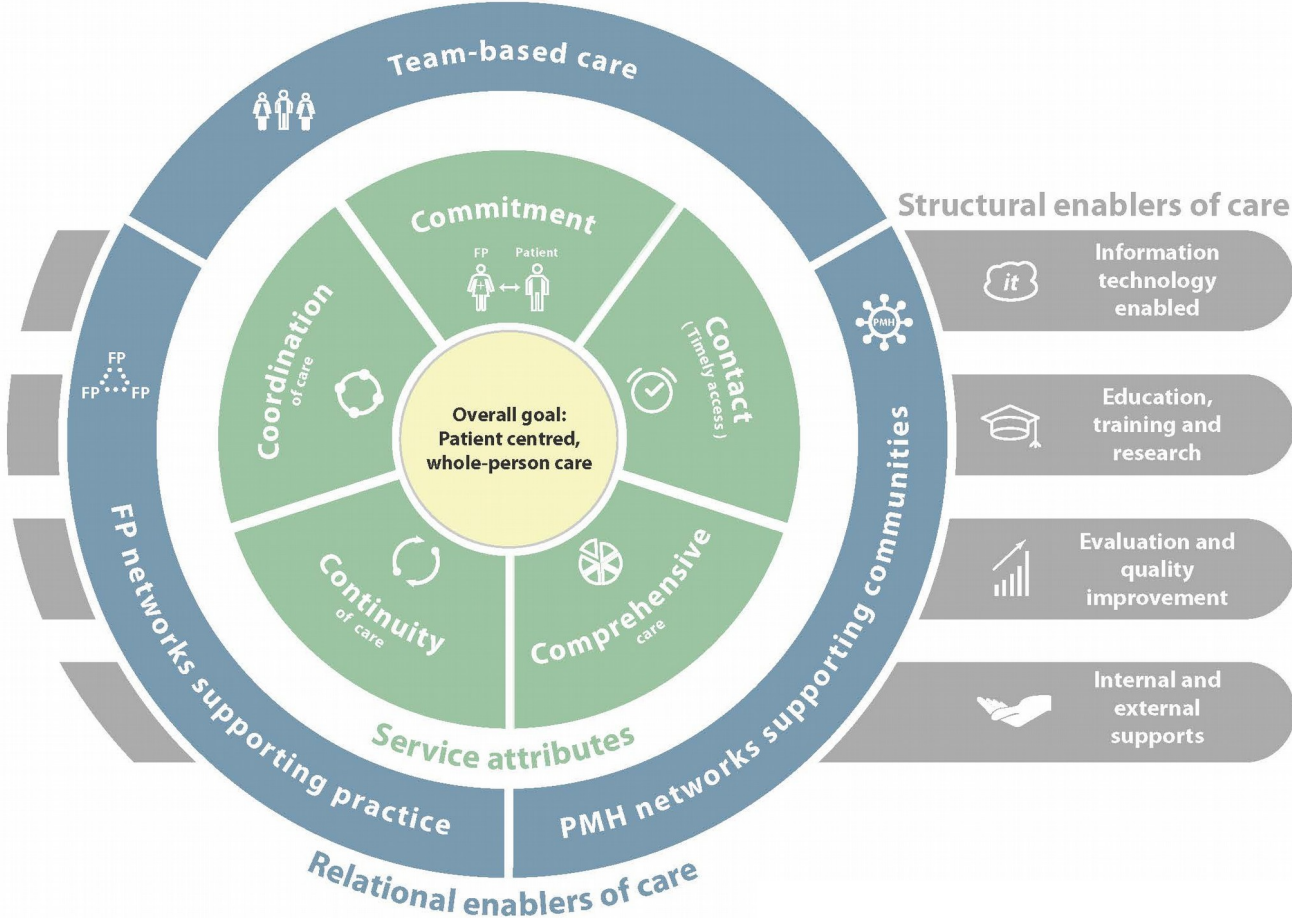
But first:
... let's talk about principles of 'integrated systems of care' in rural communities

And then:
... let's close with hearing the Ministry of Health 'next steps' about rural integrated systems of care

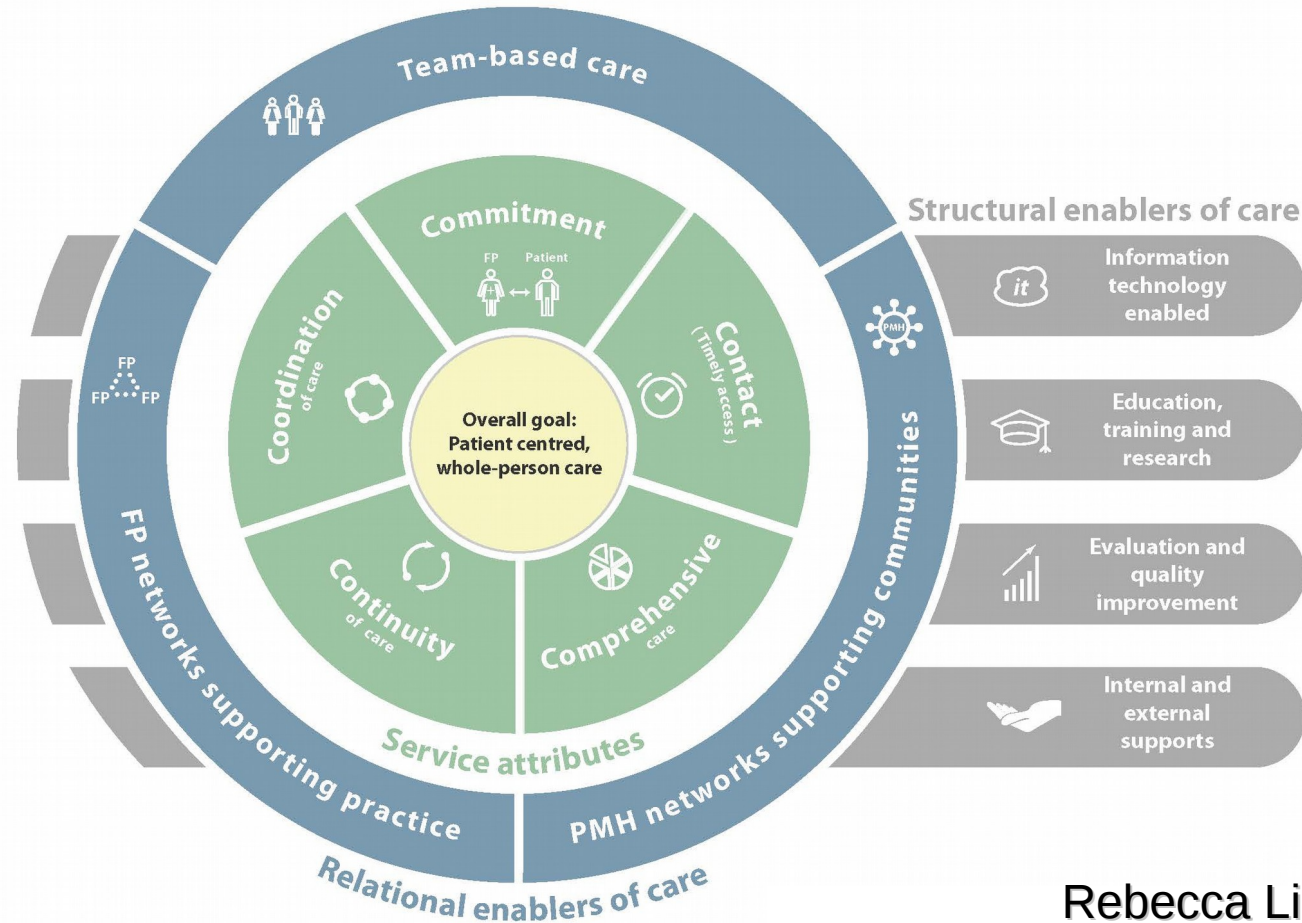
Remote Division



Patient Medical Home in BC



Patient Medical Home in BC



Rebecca Lindley
Chair, Rural & Remote Division

'Disclosure'

No commercial bias or relationship with industry

- Chair of Rural & Remote Division of FP

- member of RCCbc Core committee

- The CARE Course

Rural GPs say...

Same work,
new name

We already work
in teams!

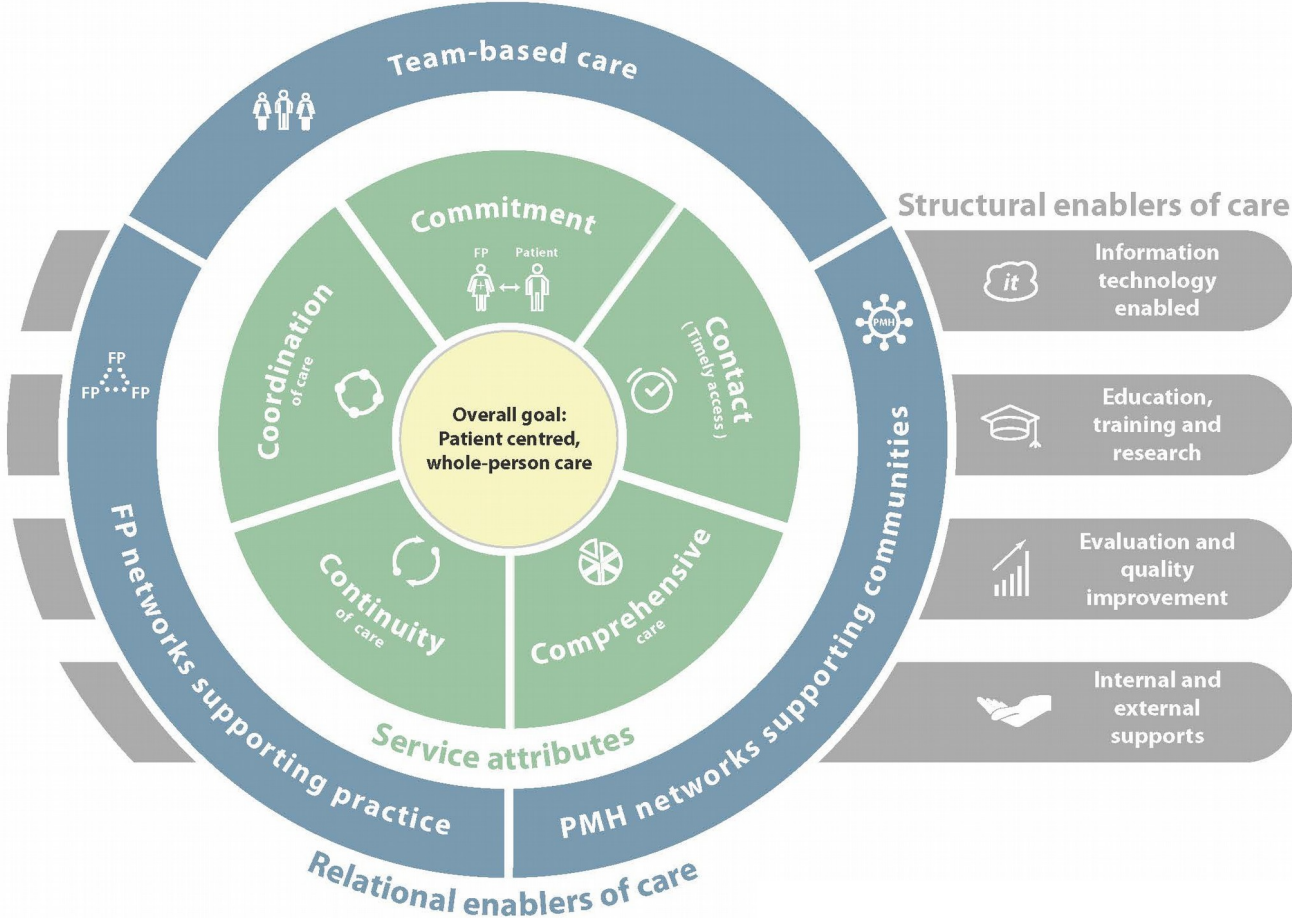
We've been
doing it for
decades...

We are
integrated
across the
community

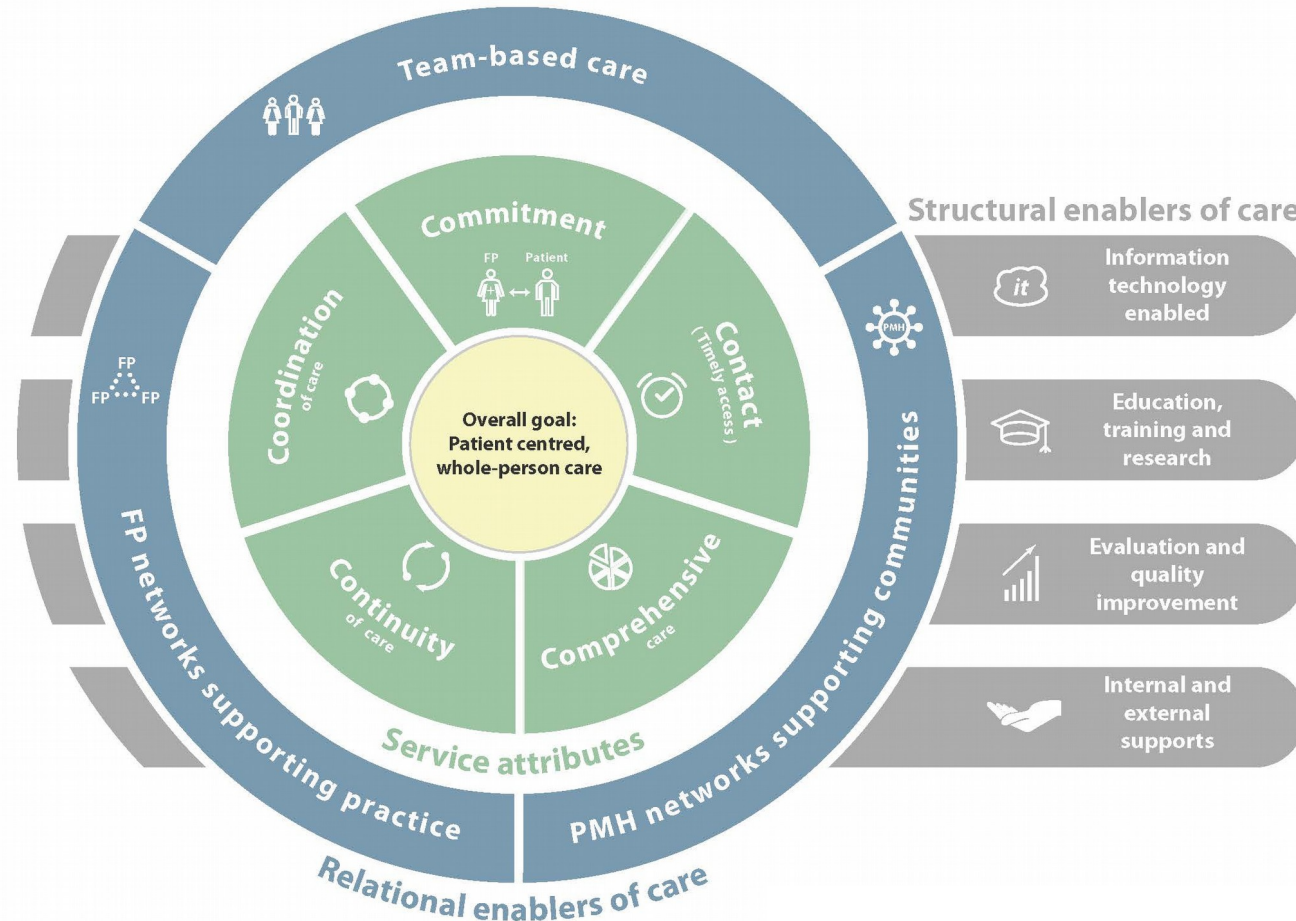
We are good at
whole-person
care



Patient Medical Home in BC



Patient Medical Homes in BC



Rural: *not just* primary care



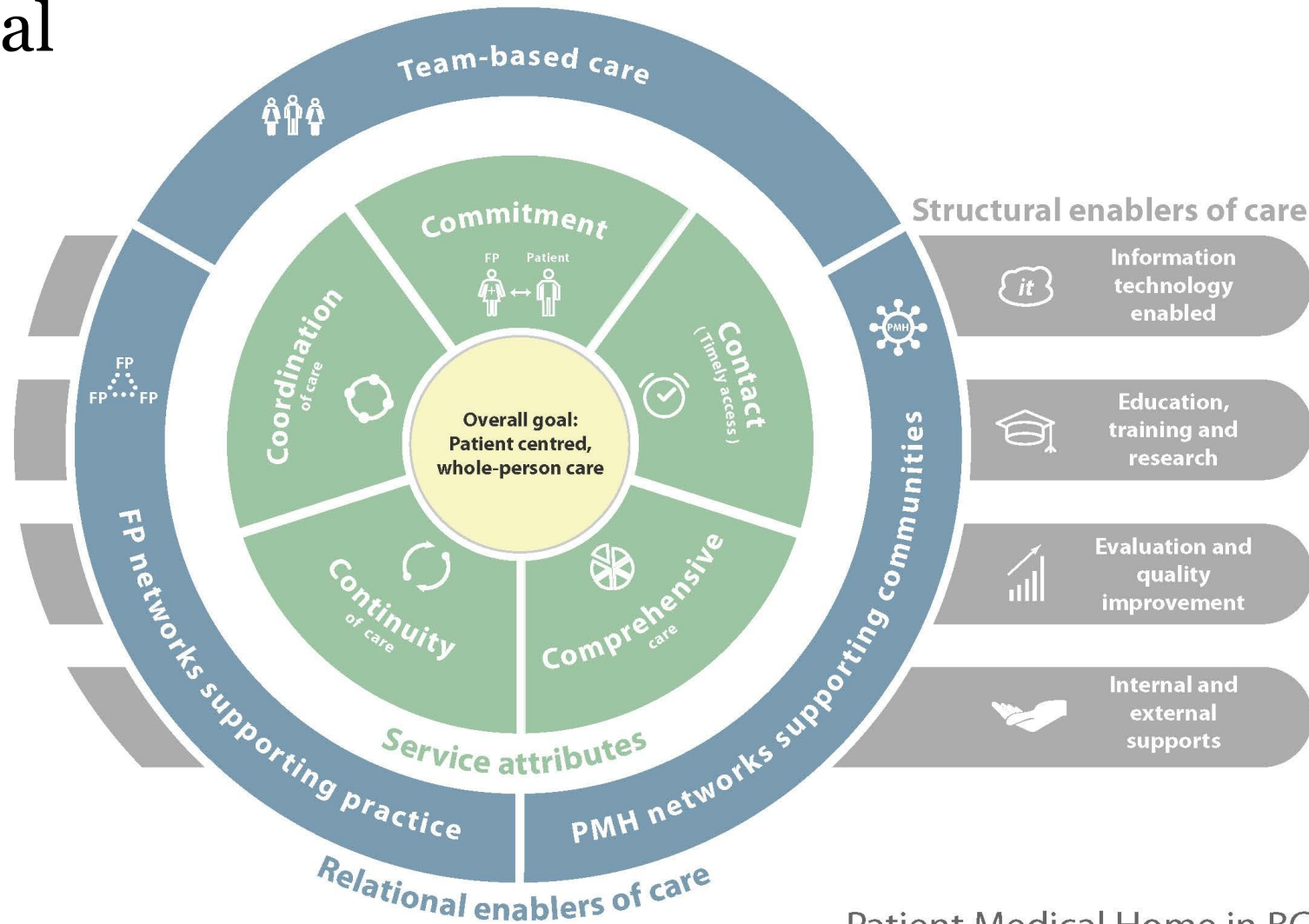


What is Primary Health Care?

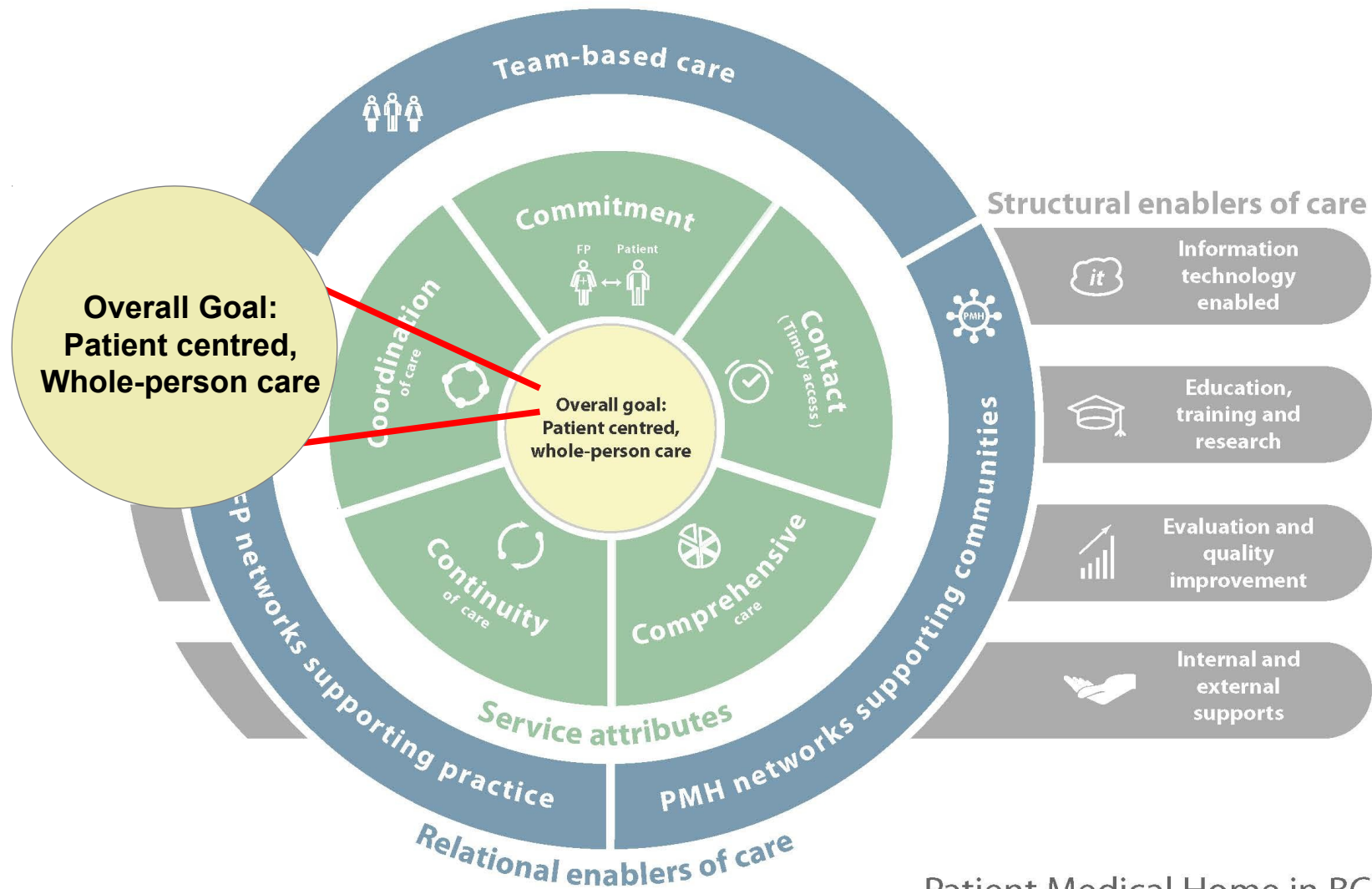
“...essential health care based on practical, scientifically sound and socially acceptable methods and technology made universally accessible to individuals and families in the community through their full participation and at a cost that the community and country can afford to maintain at every stage of their development in the spirit of self reliance and self-determination. It forms an integral part both of the country’s health system, of which it is the central function and main focus, and of the overall social and economic development of the community. It is the first level of contact of individuals, the family and community with the national health system bringing health care as close as possible to where people live and work, and constitutes the first element of a continuing health care process.”

Patient Medical Homes

What do patients already experience in rural communities?



Patient Medical Home in BC
September 20, 2016



Patient Medical Home in BC

September 20, 2016

Strong patient-provider relationships already exist
...often *enhanced* by community connections...

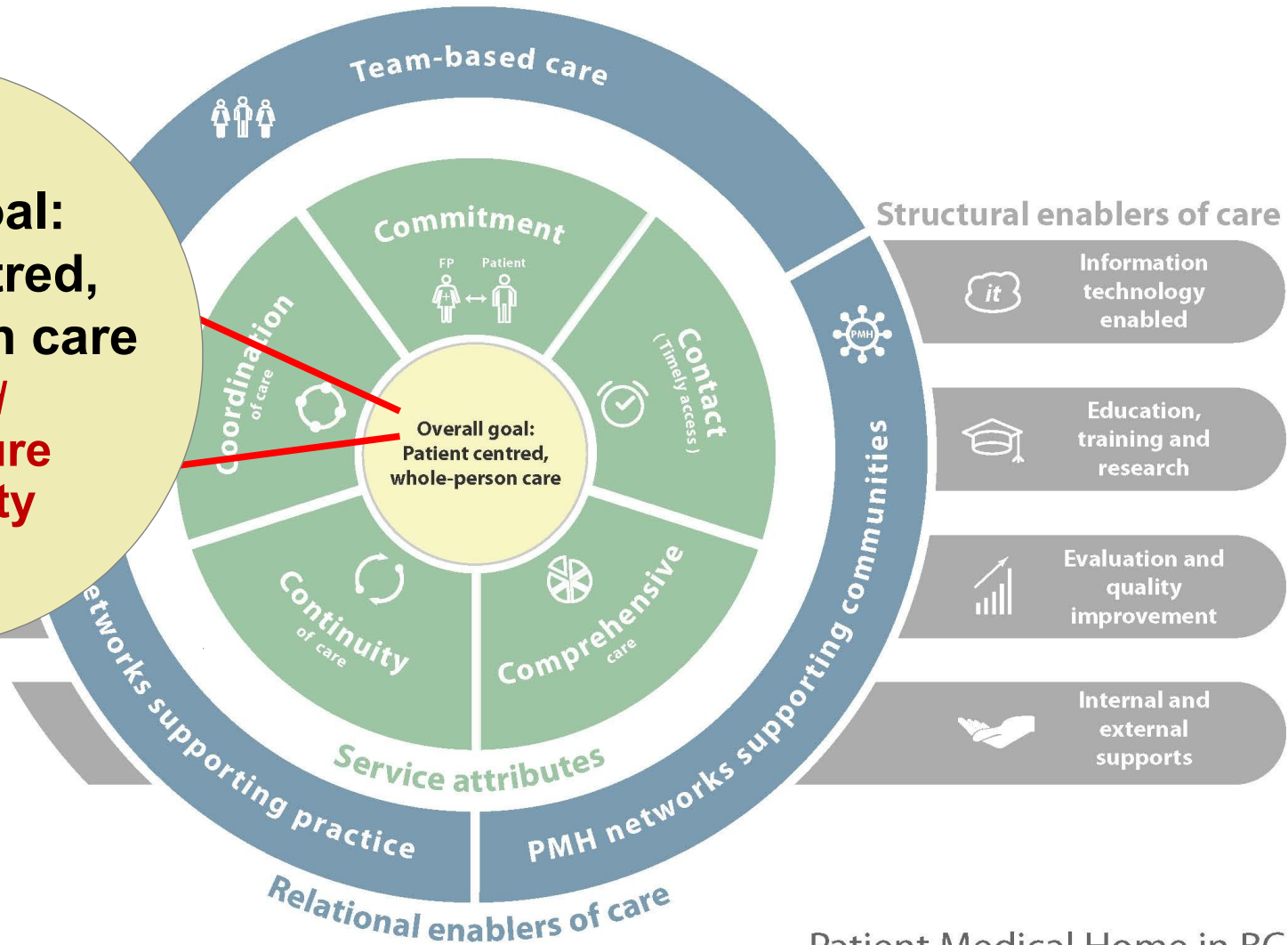


Integrated rural health services delivered by teams *wrap around* the patient, family and community.

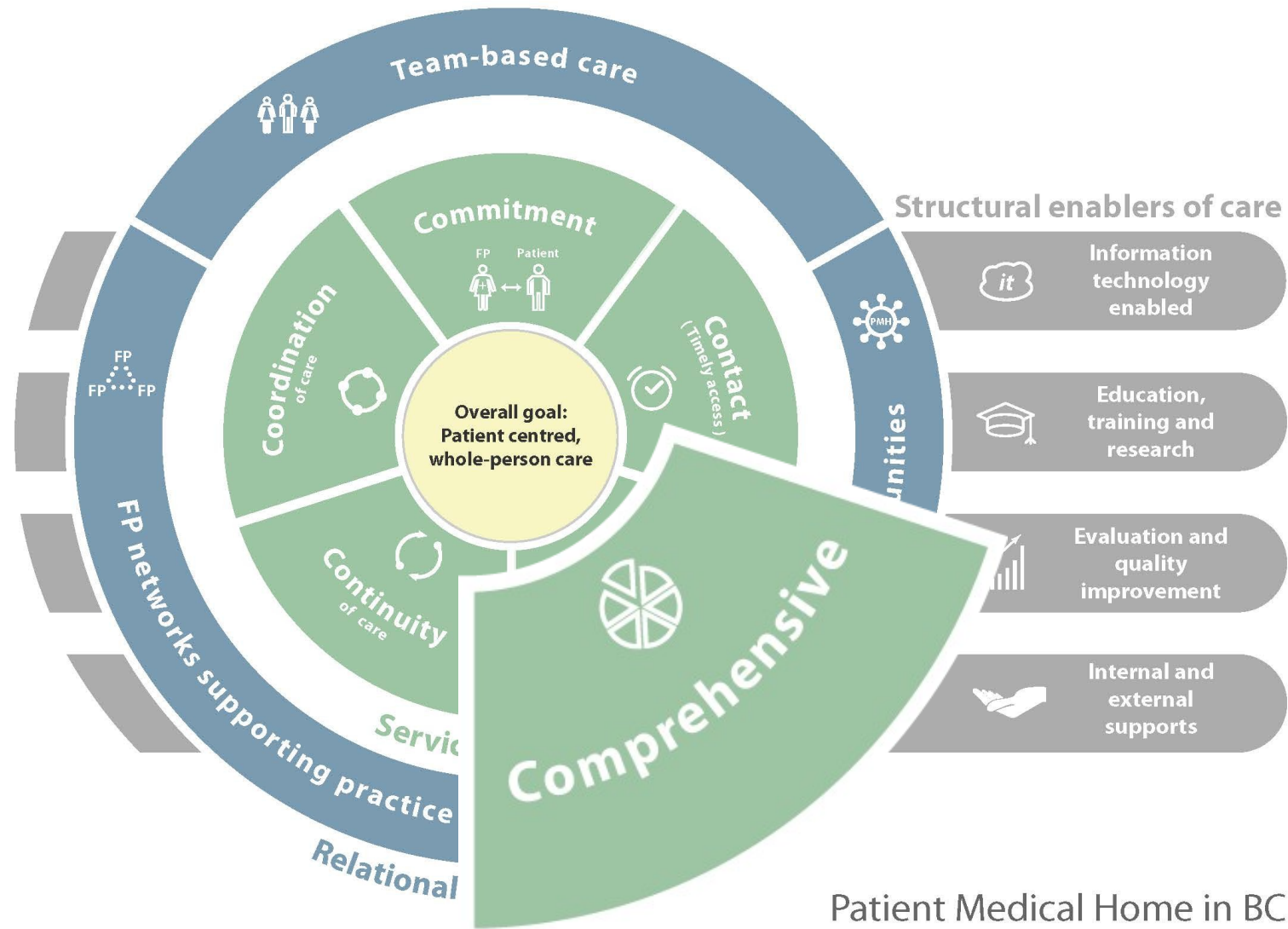


...are deeply rooted in the *individual and community* geographic, cultural, and socio-economic determinants of health.

**Overall Goal:
Patient centred,
Whole-person care**
*grounded
in local culture
& community*



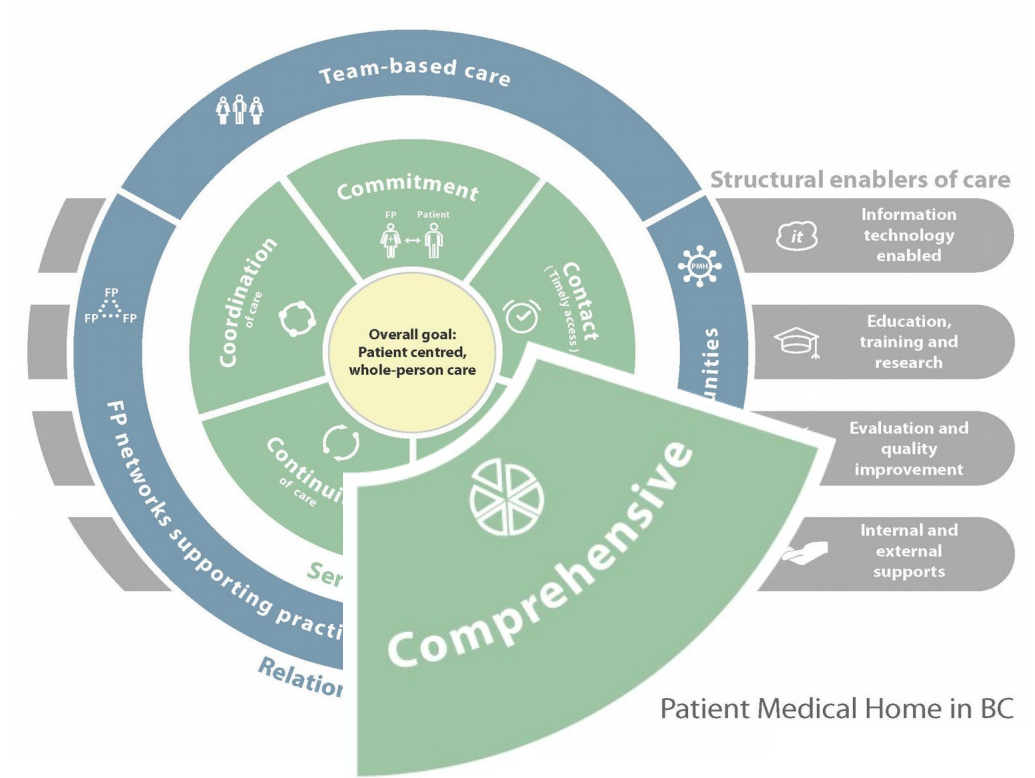
Patient Medical Home in BC
September 20, 2016



Patient Medical Home in BC
September 20, 2016

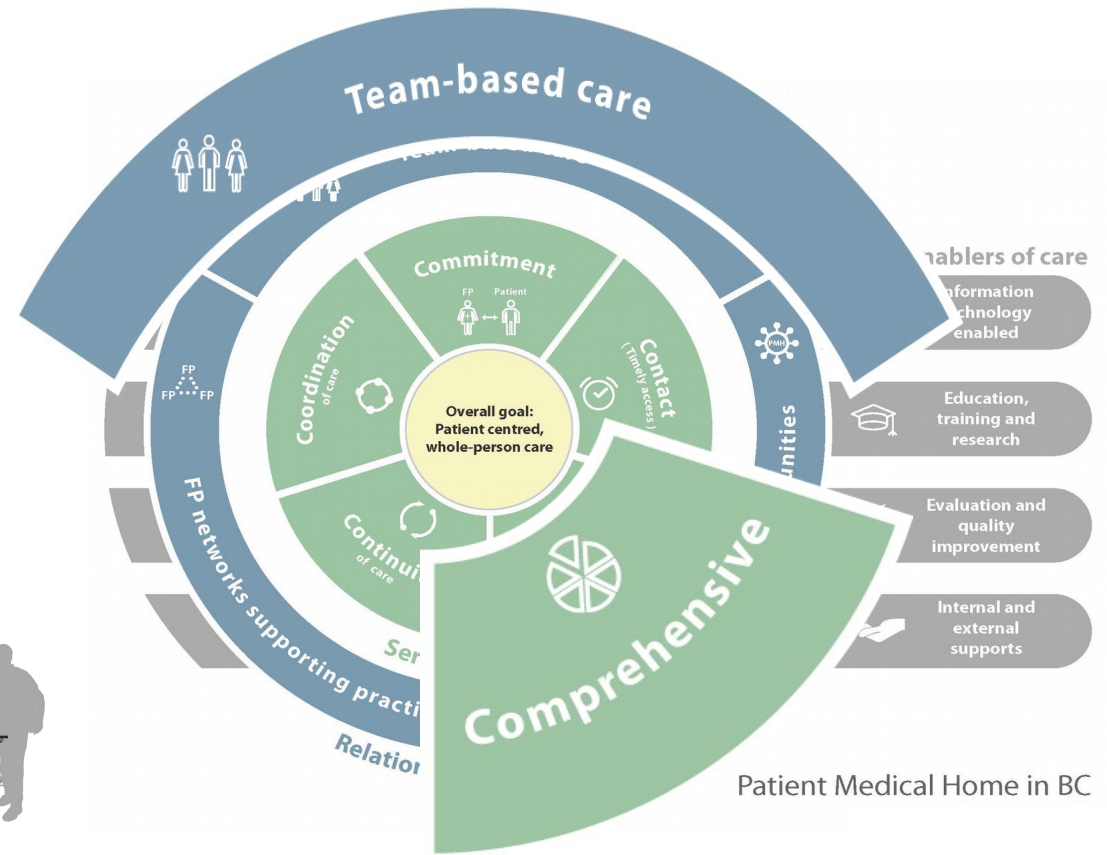
Full Spectrum of Care **in a community**

Integrated,
interprofessional
communities of
'generalist' providers
working in teams



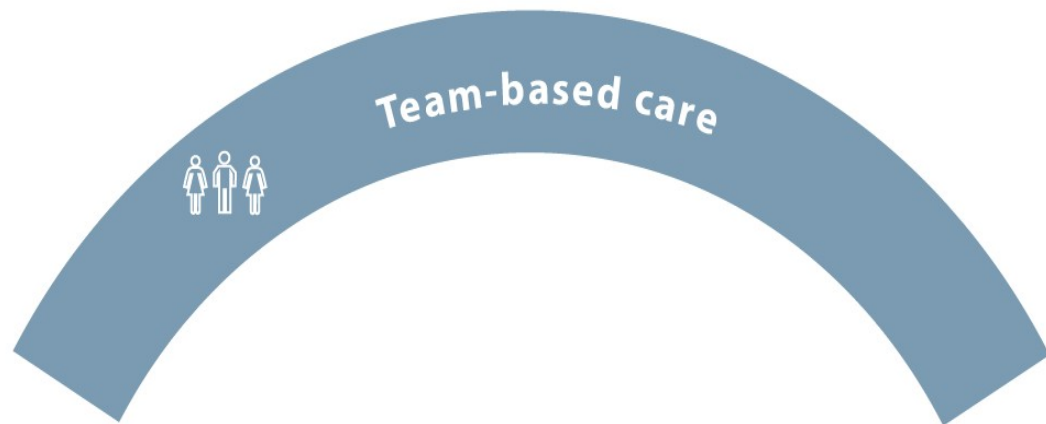
Full Spectrum of Care **in a community**

Integrated,
interprofessional
communities of
'generalist' providers
working in teams

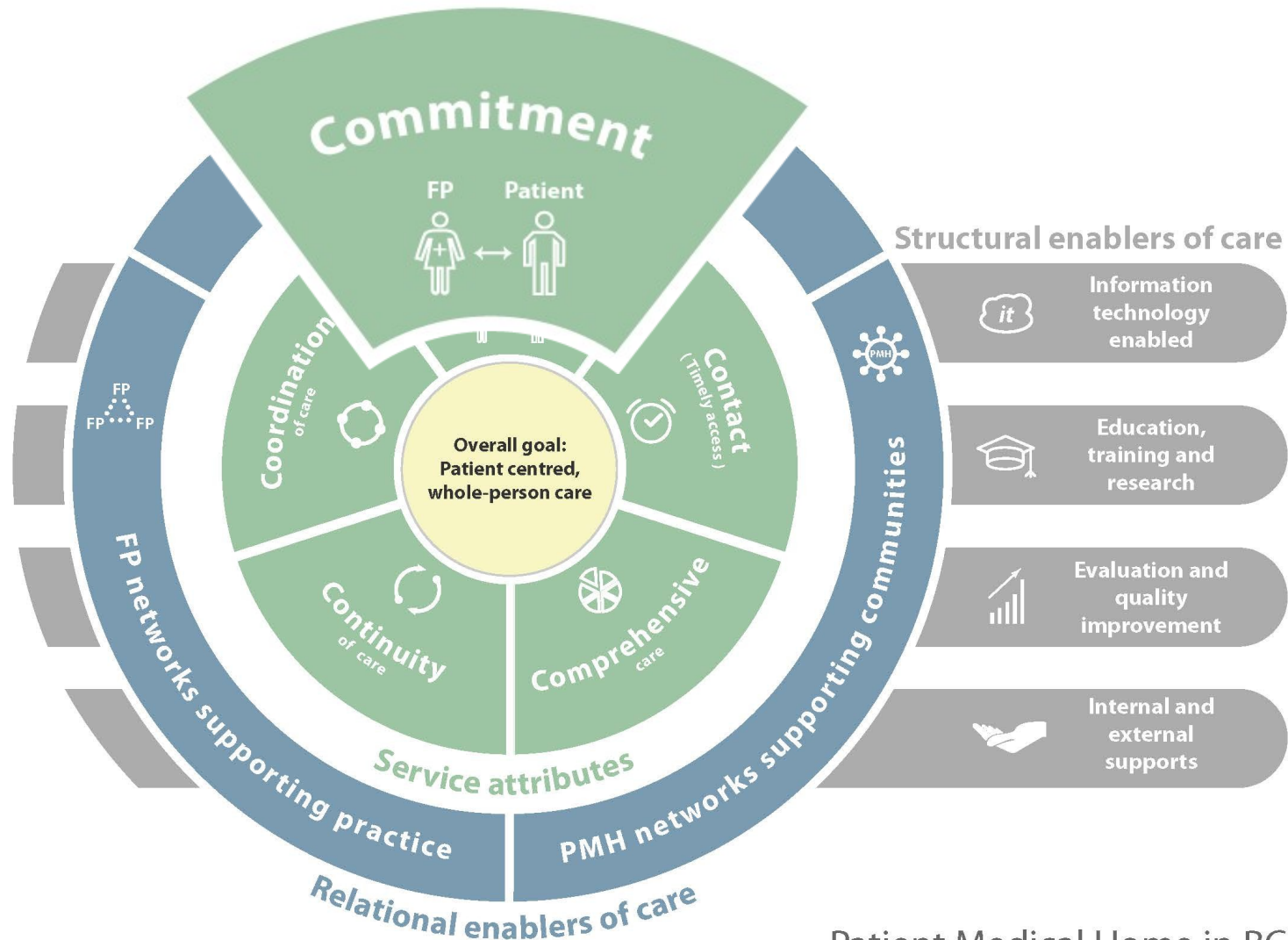




Rural GPs, NPs, RNs, specialists and other health care providers work together **within a practice, facility, community** and/or **across a geographic region.**

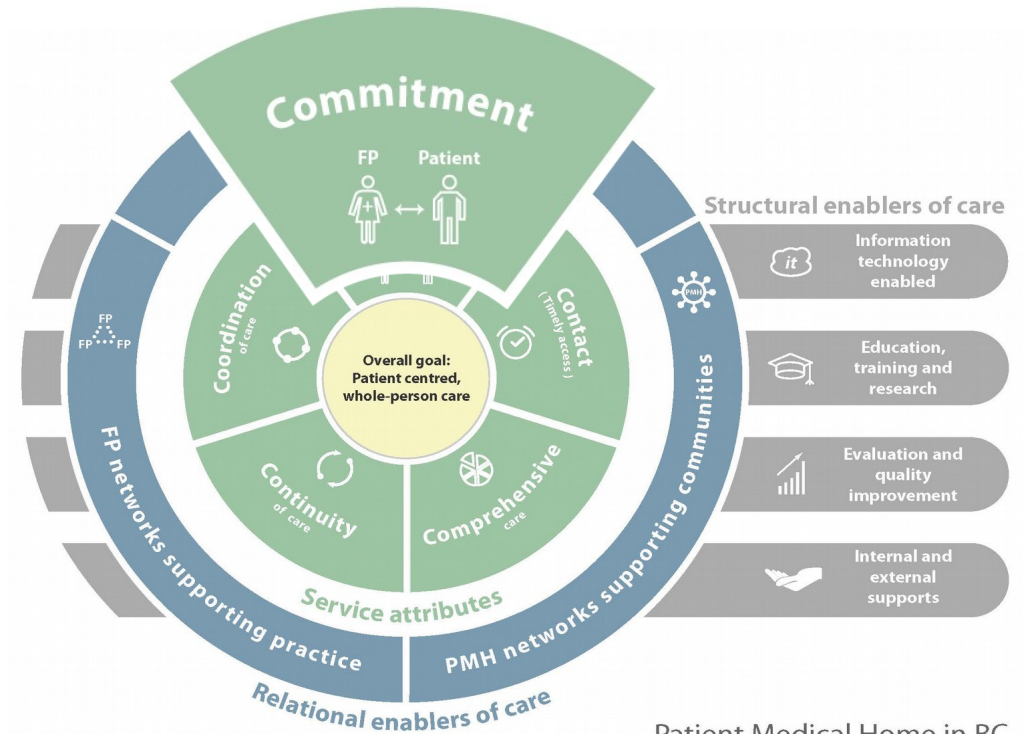


Team members often **share / alternate** as the Most Responsible Provider (MRP) for different elements of a patient's medical care.



Patient Medical Home in BC
September 20, 2016

Commitment (A reliable relationship/attachment to a primary care provider)

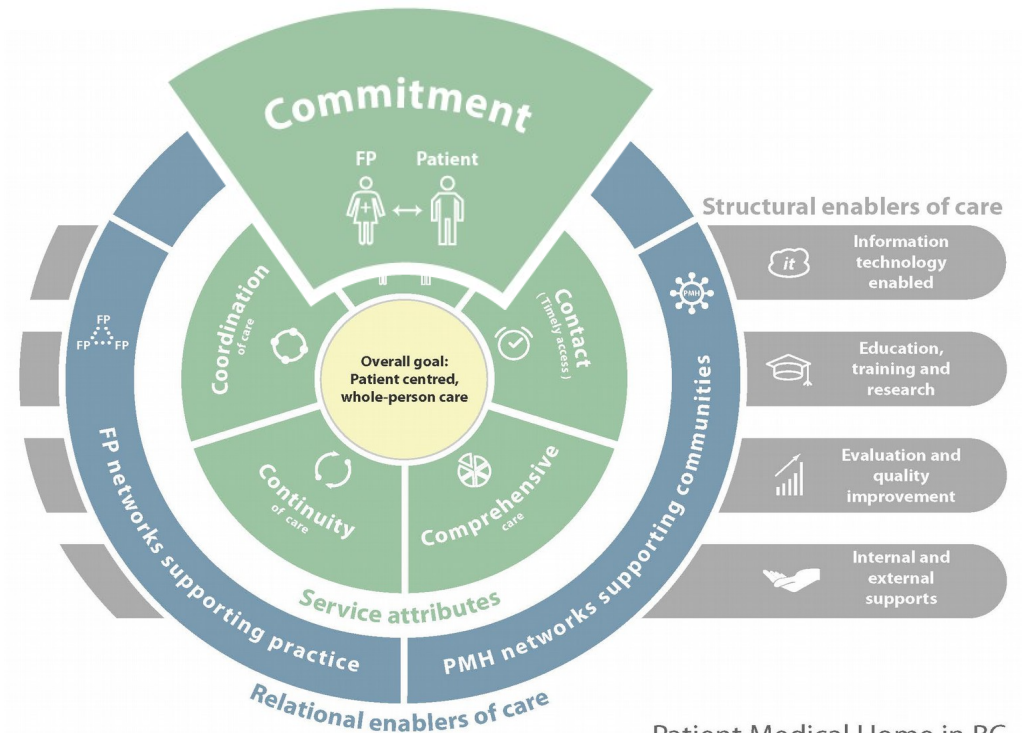


Patient Medical Home in BC

Commitment ~~(A reliable relationship/attachment to a primary care provider)~~



Commitment needs to be to support health and wellness *in the community*

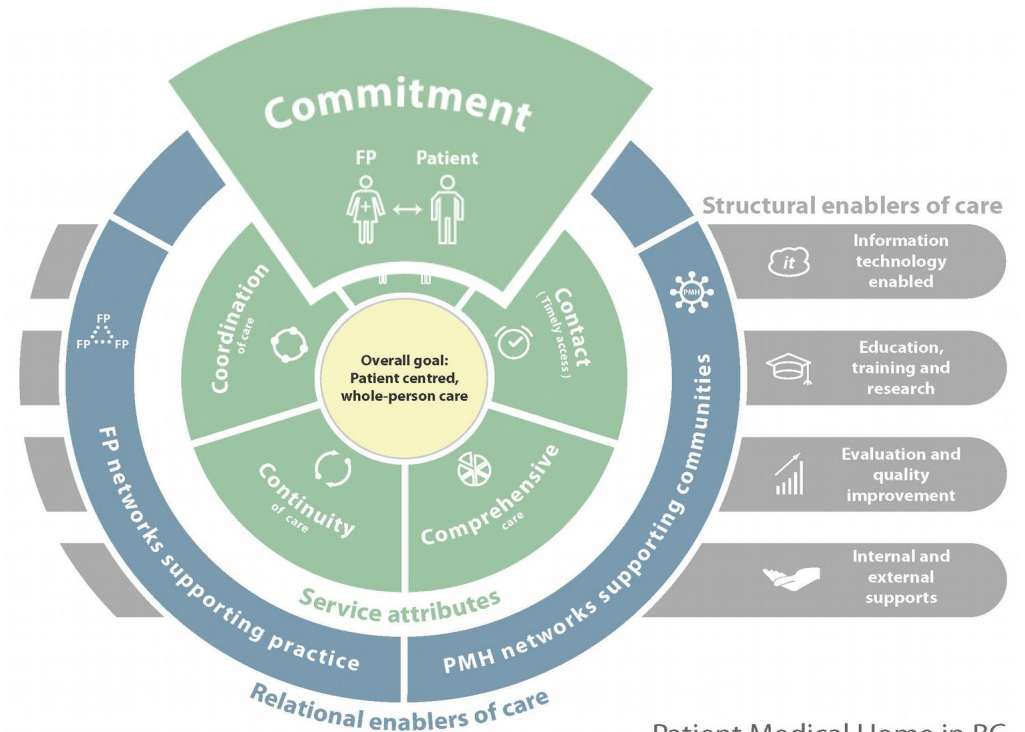


Patient Medical Home in BC

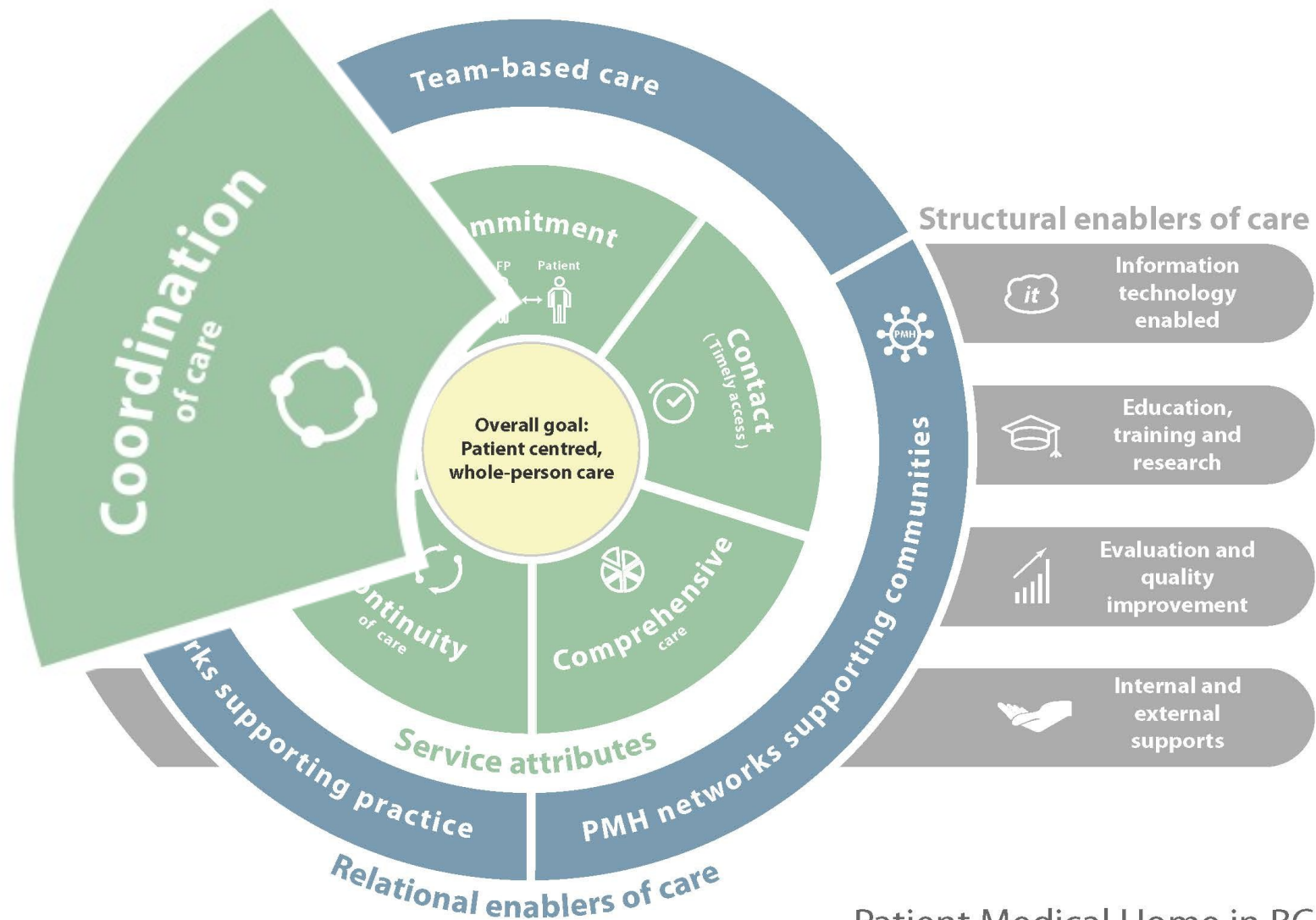
Commitment



Commitment needs to be
to the *community*,
And to the *team* that supports that community



Patient Medical Home in BC



Patient Medical Home in BC

September 20, 2016



Divisions of Family Practice

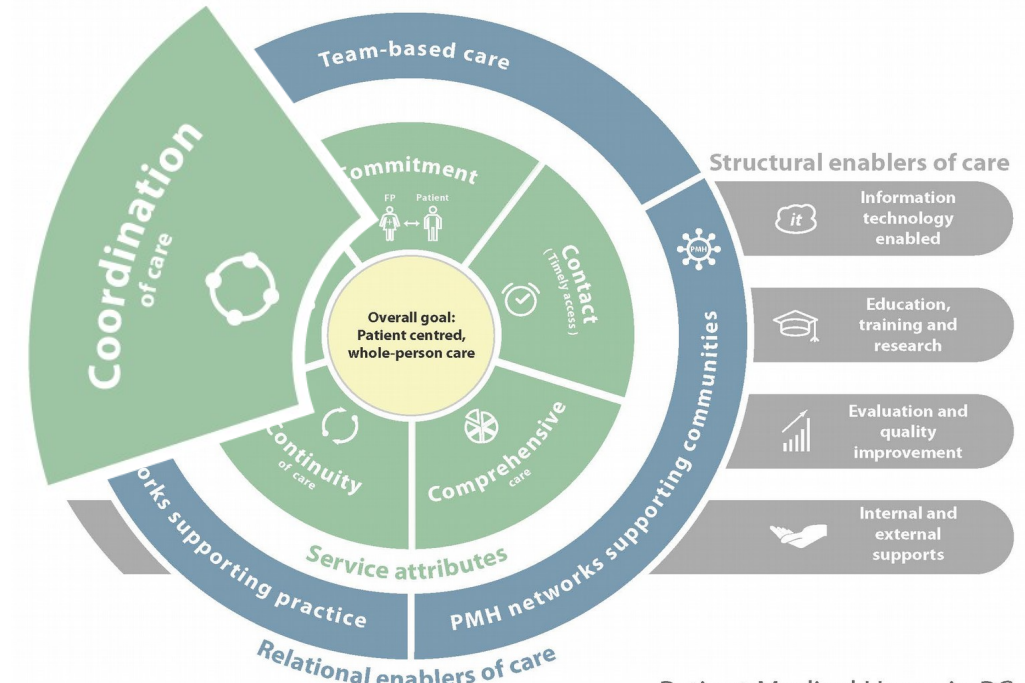
A GPSC initiative

Coordination of Care

is done *well within* a community... by the team.

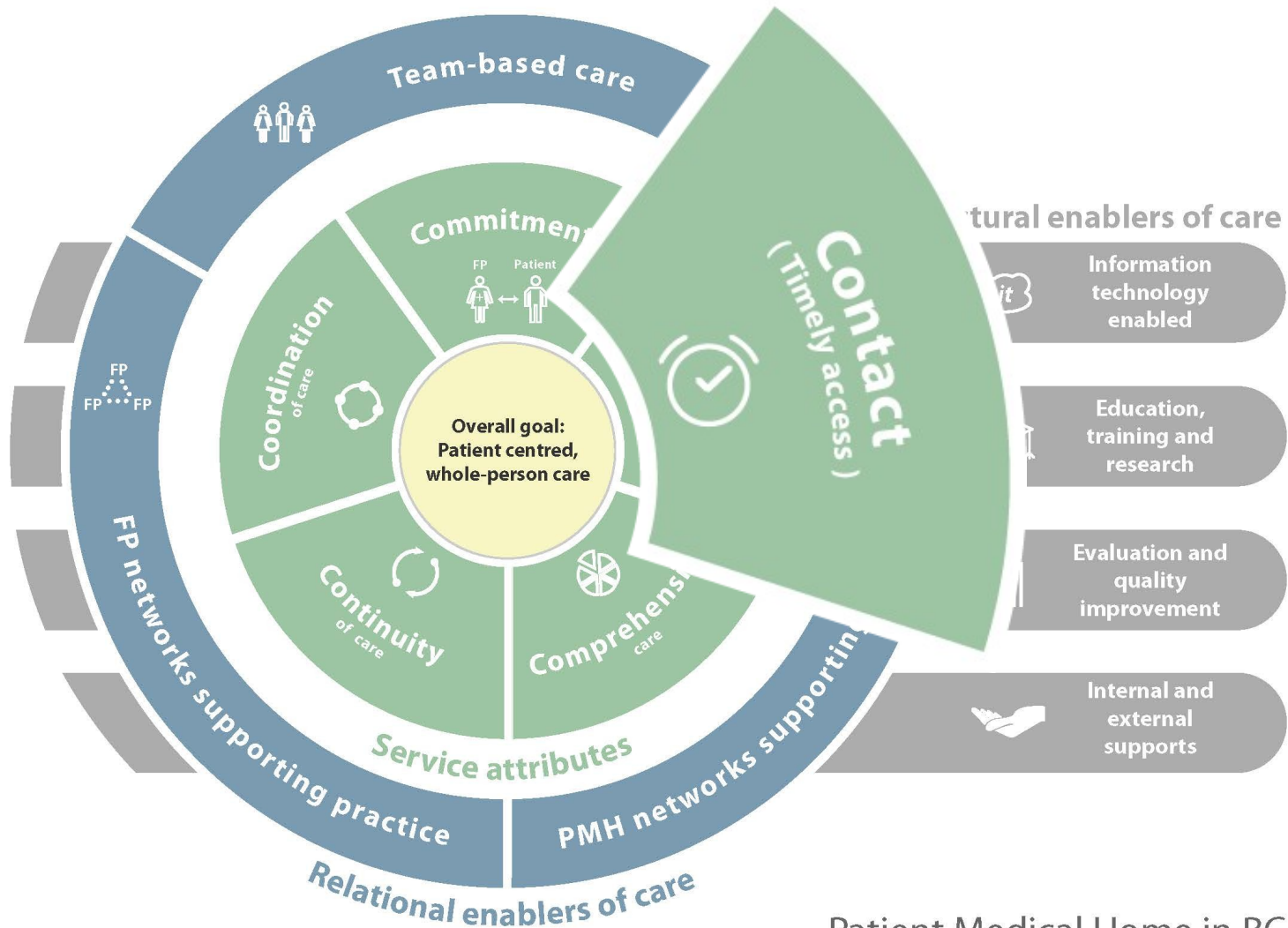


Patients are supported to navigate the complexities of service boundaries and geography.



Patient Medical Home in BC
September 20, 2016

Coordination *outside* of the community is the challenge.



Patient Medical Home in BC

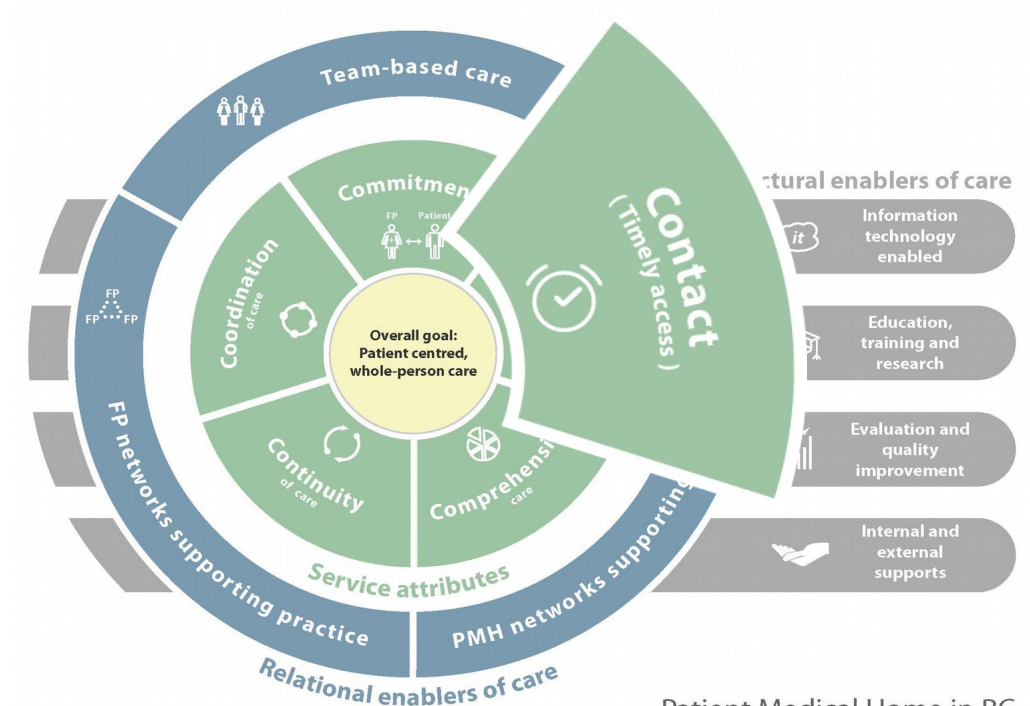
September 20, 2016

Contact (timely access)

It looks different in rural communities.

Most patients *know* how to *appropriately* access advice and care on a 24/7 basis in their community.

Out of hours access is *different* in *each* rural community.



Patient Medical Home in BC
September 20, 2016

Rural Health Care Ecosystems



Rural Health Care Ecosystems

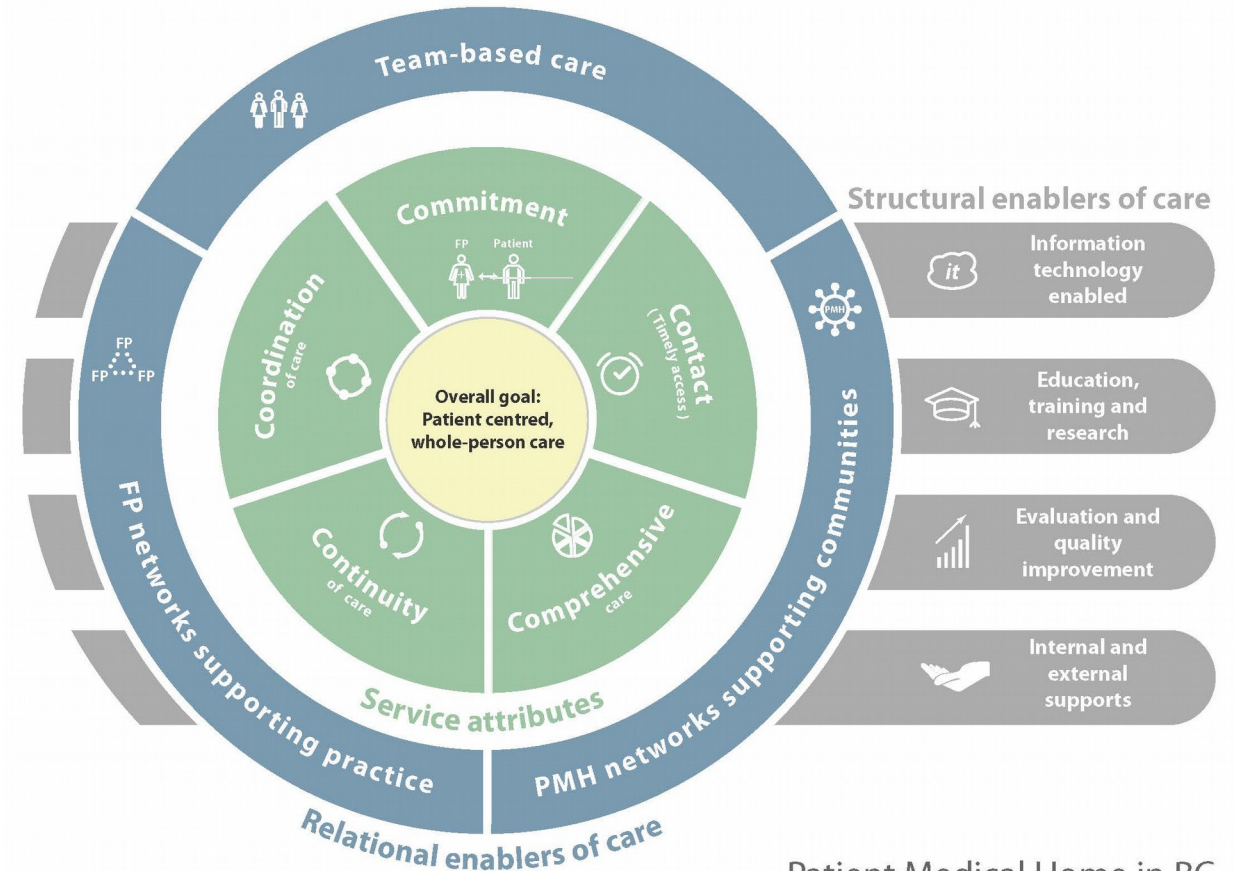


“It takes a village...”

Supporting the Whole Community Ecosystem...

Builds **security and continuity** of service and care for patients

Fosters **resiliency and sustainability** for providers.



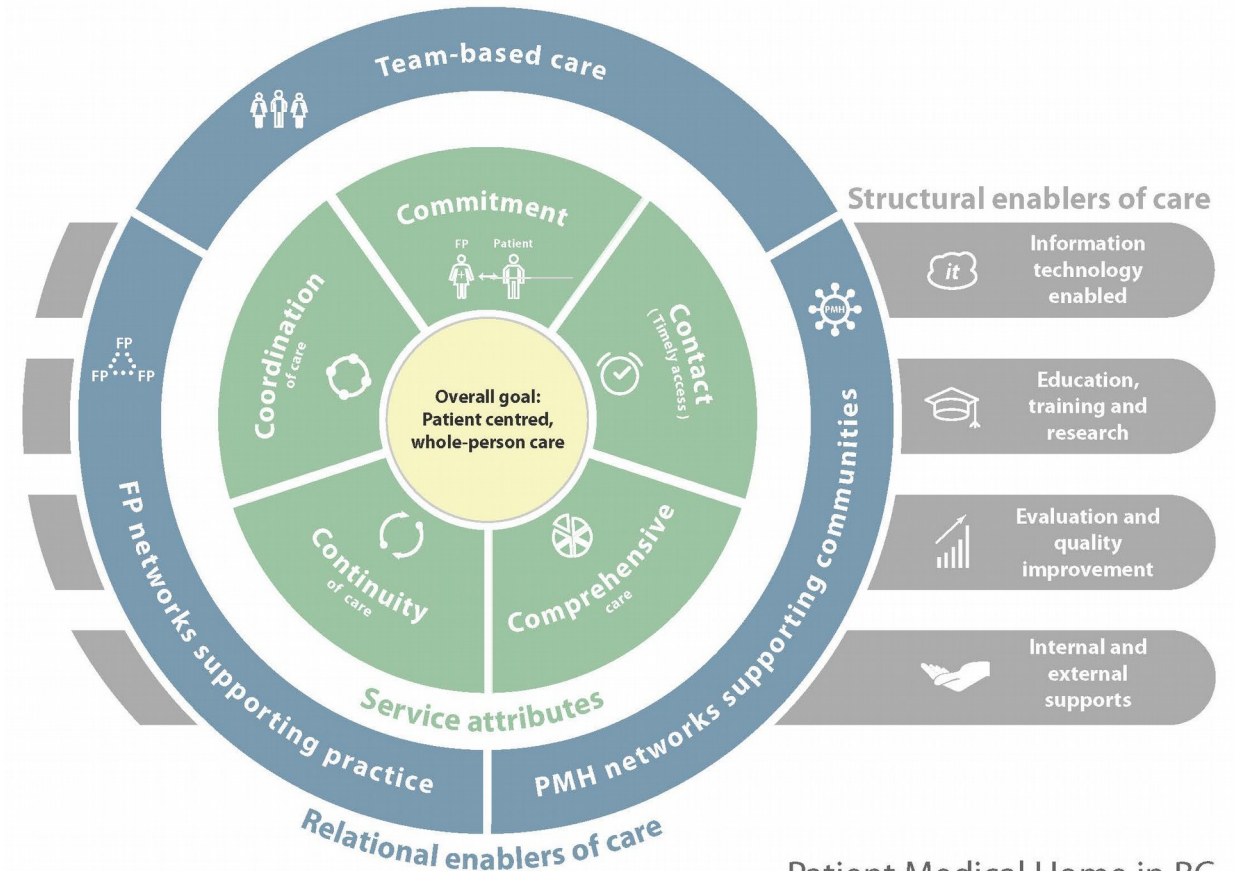
Patient Medical Home in BC
September 20, 2016

Supporting the Whole Community Ecosystem...

Reduces *system fragility*

Builds *security and continuity* of service and care for patients

Fosters *resiliency and sustainability* for providers.



Patient Medical Home in BC
September 20, 2016

Structural enablers of care



Information
technology
enabled



Education,
training and
research



Evaluation and
quality
improvement



Internal and
external
supports



Divisions of Family Practice

A GPSC initiative

Structural Enablers of Care

Acknowledge **unique elements, challenges and opportunities** of rural patients, providers and communities

Structural enablers of care



Information
technology
enabled



Education,
training and
research



Evaluation and
quality
improvement



Internal and
external
supports



Structural Enablers of Care

Acknowledge **unique elements, challenges and opportunities** of rural patients, providers and communities

Leadership and resources must be locally-relevant, flexible and appropriate

Structural enablers of care



Information
technology
enabled



Education,
training and
research



Evaluation and
quality
improvement



Internal and
external
supports



Structural Enablers of Care

Acknowledge **unique elements, challenges and opportunities** of rural patients, providers and communities

Leadership and resources must be locally-relevant, flexible and appropriate

Collaboration is needed across *all* health authorities: including PHSA and FNHA

Structural enablers of care



Information
technology
enabled



Education,
training and
research



Evaluation and
quality
improvement



Internal and
external
supports



What will work
in *your*
community?





Discussion